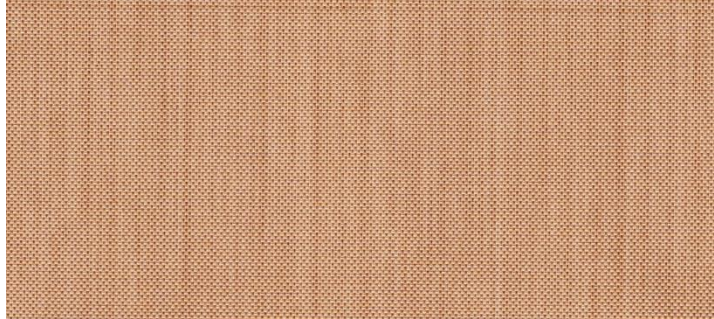


# 516.13



| Product           | Product category | Coating |
|-------------------|------------------|---------|
| PTFE GLASS FABRIC | INDUSTRIAL SERIE | PTFE    |

| Properties  | Metric      |                   | Imperial    |            |
|---|-------------|-------------------|-------------|------------|
| Standard width(s)<br><i>Please ask for other widths</i> | 1000, 1100  | mm                | 39.5, 43.4  | inches     |
| Thickness   | 0,10        | mm                | 0.0039      | inches     |
| Weight  | 170         | gr/m <sup>2</sup> | 5.01        | oz/sq yd   |
| PTFE content  | 37          | %                 | 37          | %          |
| Tensile strength  | 1200        | N/5 cm            | 137         | Ibs/inches |
| Temperature resistance                                  | -150 to 260 | °C                | -238 to 500 | °F         |

This line combines quality glass fabrics with medium level of PTFE coating to achieve cost effective performance for mechanical applications such as heat-sealing, release sheets, belting. The product can be used in direct contact with food. The product does not contain banned substances as described in RoHS directive and will not affect RoHS compliance.



This product has been manufactured in a facility certified by ISO 9001 Quality Management System.

Note: Nominal thickness, weight and tensile strength values are typical and are not intended as a specification minimum. Weight tolerance g/m<sup>2</sup> = ±%5 - Tensile strength tolerance -%10

All technical data are based on average values. These values are not intended for use in preparing specifications. Technical information contained herein are based on test results FIBERFLON believes to be reliable, but they are not to be construed in any manner as warranties expressed. All data is subject to change without notice.