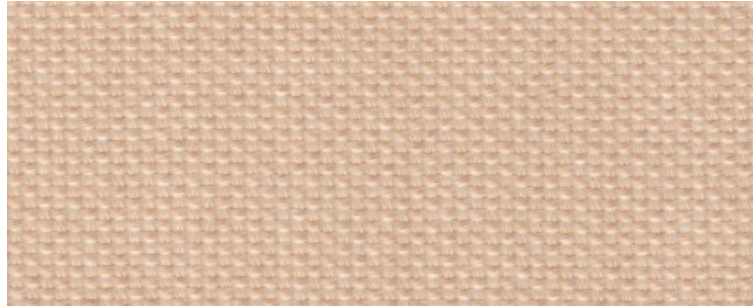


# 04055



Product	Product category	Coating
PTFE GLASS FABRIC	HEAVY BELTING SERIE	PTFE

Properties	Metric		Imperial	
Standard width(s) <i>Please ask for other widths</i>	2550	mm	100.4	inches
Thickness	0,77	mm	0.0303	inches
Weight	1085	gr/m <sup>2</sup>	32	oz/sq yd
PTFE content	47	%	47	%
Tensile strength	5000	N/5 cm	571	lbs/inches
Elongation at break	2	%	2	%
Temperature resistance	-150 to 260	°C	-238 to 500	°F

We have developed specially formulated fluoropolymer coating on a wide range of woven fiberglass products for use in the carpet industry. The resultant fabrics has best release properties and longer life times than similar products on the market. Different structural weaving types offer several types of impression of the glass fabrics to finished products.

Applications: Conveyor belting or release sheets for PVC backed carpets, door mats baking and rubber curing. The product can be used in direct contact with food.

The product does not contain banned substances as described in RoHS directive and will not affect RoHS compliance.



Note: Nominal thickness, weight and tensile strength values are typical and are not intended as a specification minimum. Weight Tolerance g/m<sup>2</sup> = ±%5  
 All technical data are based on average values. These values are not intended for use in preparing specifications. Technical information contained herein are based on test results FIBERFLON believes to be reliable, but they are not to be construed in any manner as warranties expressed.  
 All data is subject to change without notice.